



North Vat  
Dungeness, Kent

Looking East



Above: Black stained timber cladding, shingled ground  
Right: Kitchen window, South elevation







Above: Glass link  
Left: Concrete bench



Black stained timber cladding



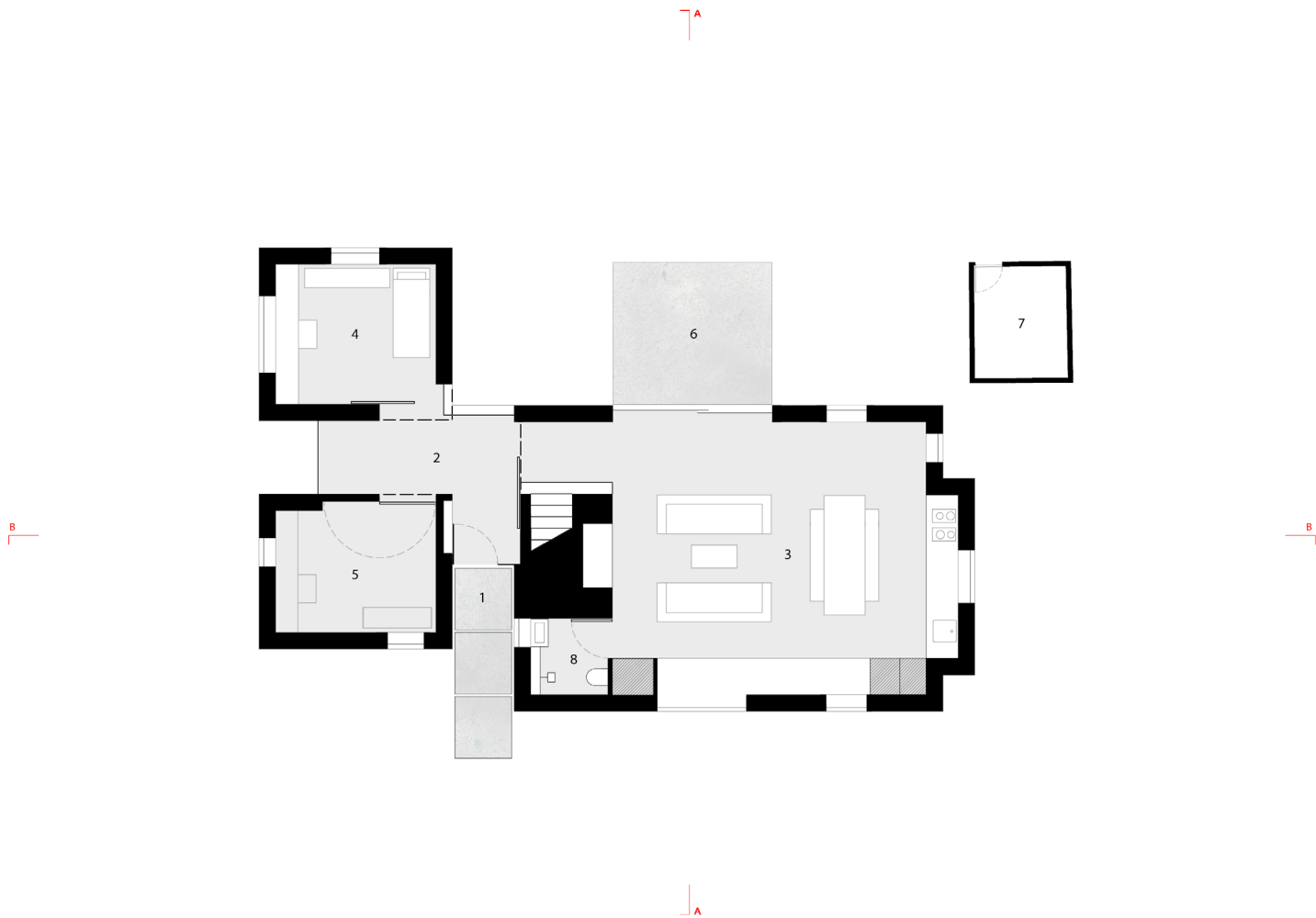




Power station, dusk



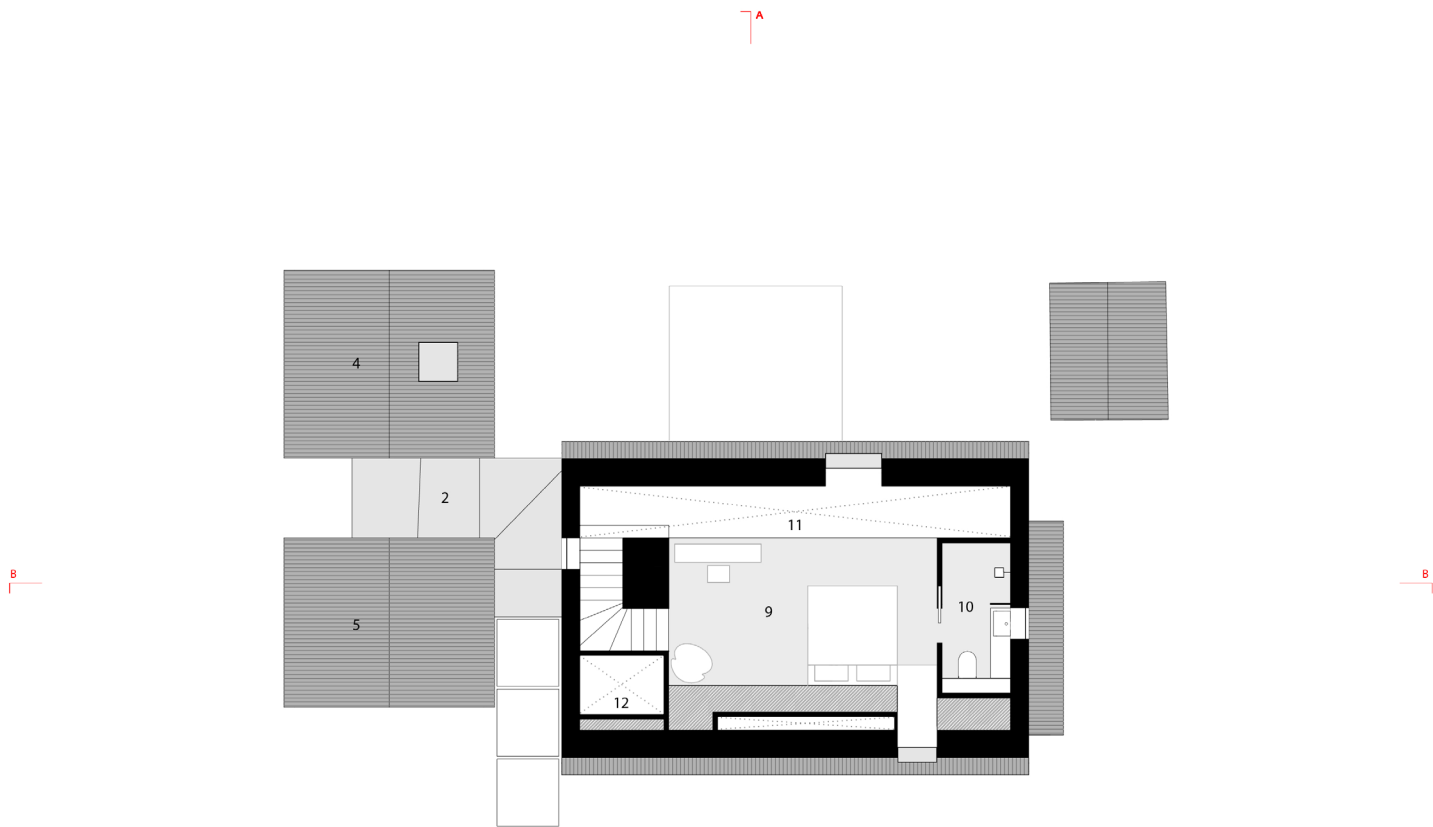
Kitchen/Living/Dining



- 1. Entrance
- 2. Glass hallway
- 3. Kitchen/Living/Dining
- 4. Bedroom
- 5. Study
- 6. Patio
- 7. Shed retained
- 8. Shower room
- 9. Master bedroom
- 10. Ensuite
- 11. Void to Kitchen/Living/Dining below
- 12. Void to Shower room below
- 13. Main House



Ground floor plan

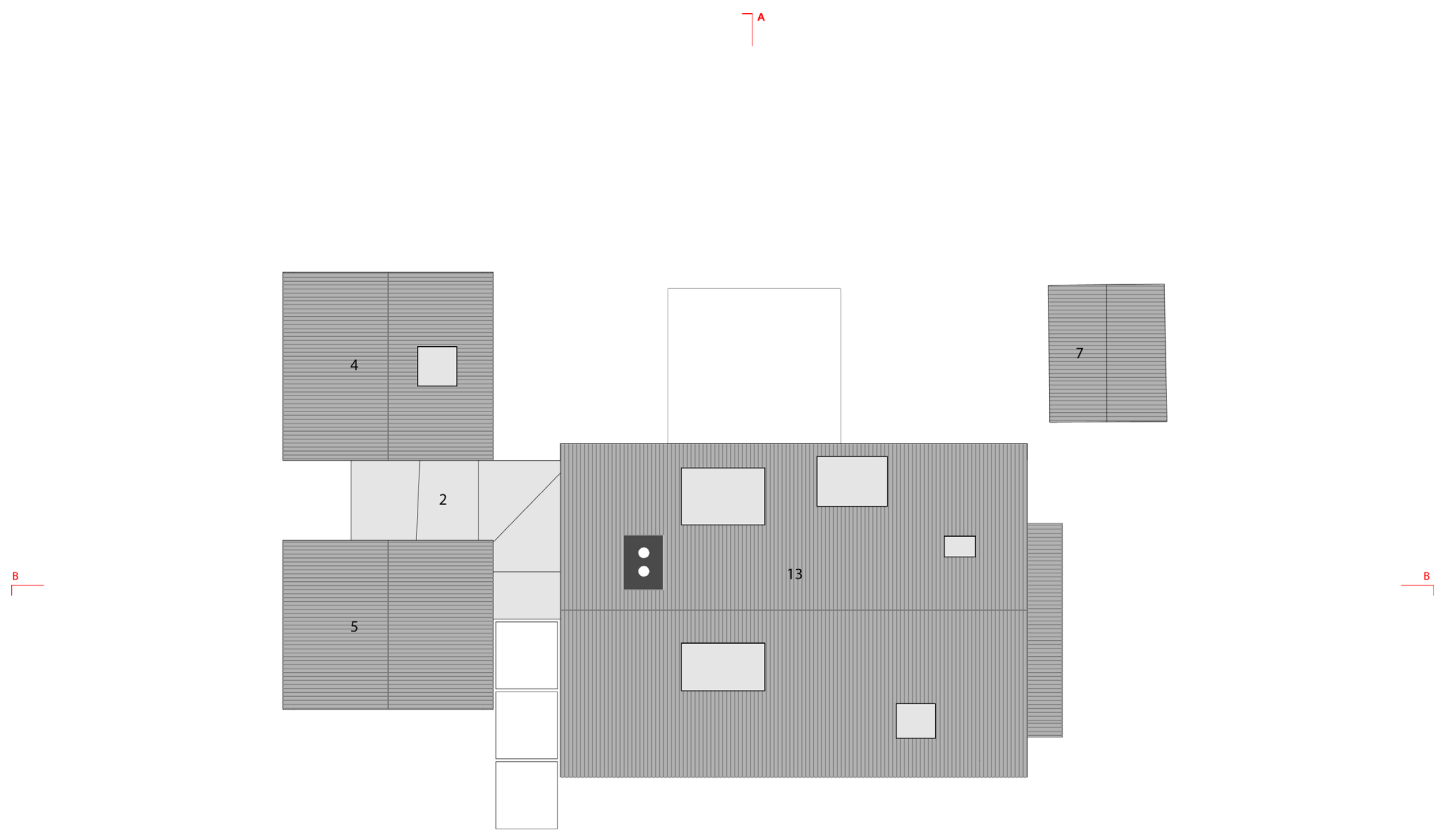


- 1. Entrance
- 2. Glass hallway
- 3. Kitchen/Living/Dining
- 4. Bedroom
- 5. Study
- 6. Patio
- 7. Shed retained
- 8. Shower room
- 9. Master bedroom
- 10. Ensuite
- 11. Void to Kitchen/Living/Dining below
- 12. Void to Shower room below
- 13. Main House

Frist floor plan



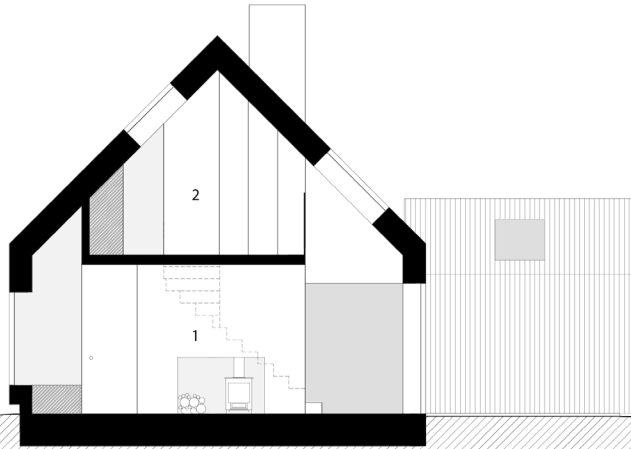




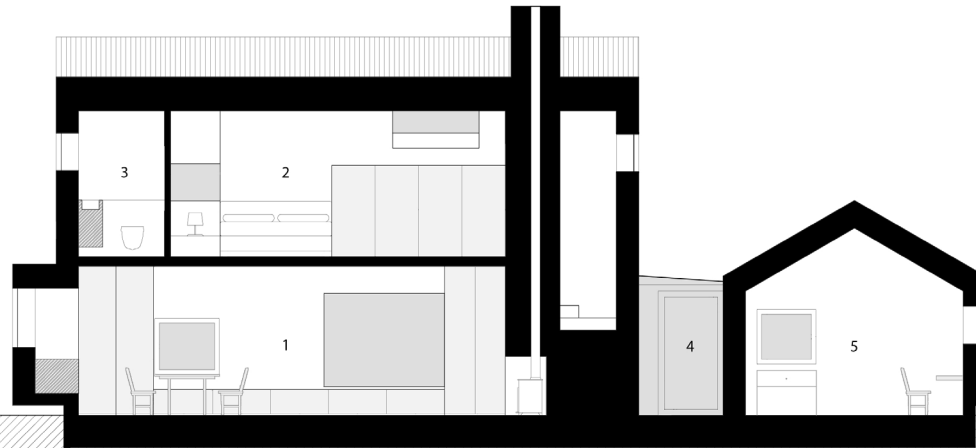
- 1. Entrance
- 2. Glass hallway
- 3. Kitchen/Living/Dining
- 4. Bedroom
- 5. Study
- 6. Patio
- 7. Shed retained
- 8. Shower room
- 9. Master bedroom
- 10. Ensuite
- 11. Void to Kitchen/Living/Dining below
- 12. Void to Shower room below
- 13. Main House

Roof plan

SECTION A



SECTION B



- 1. Kitchen/Living/Dining
- 2. Master bedroom
- 3. Ensuite
- 4. Glass hallway
- 5. Study

Photographs by H  l  ne Binet

Contact  
Cl  mence Monk  
Rodi   Davidson Architects

1 Pied Bull Yard  
London, WC1A 2AE  
+44 (0) 207 043 3551  
[clemence@rodicdavidson.co.uk](mailto:clemence@rodicdavidson.co.uk)